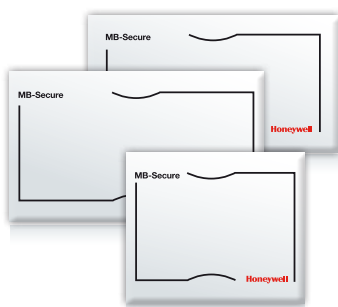




## The modular platform for security solutions

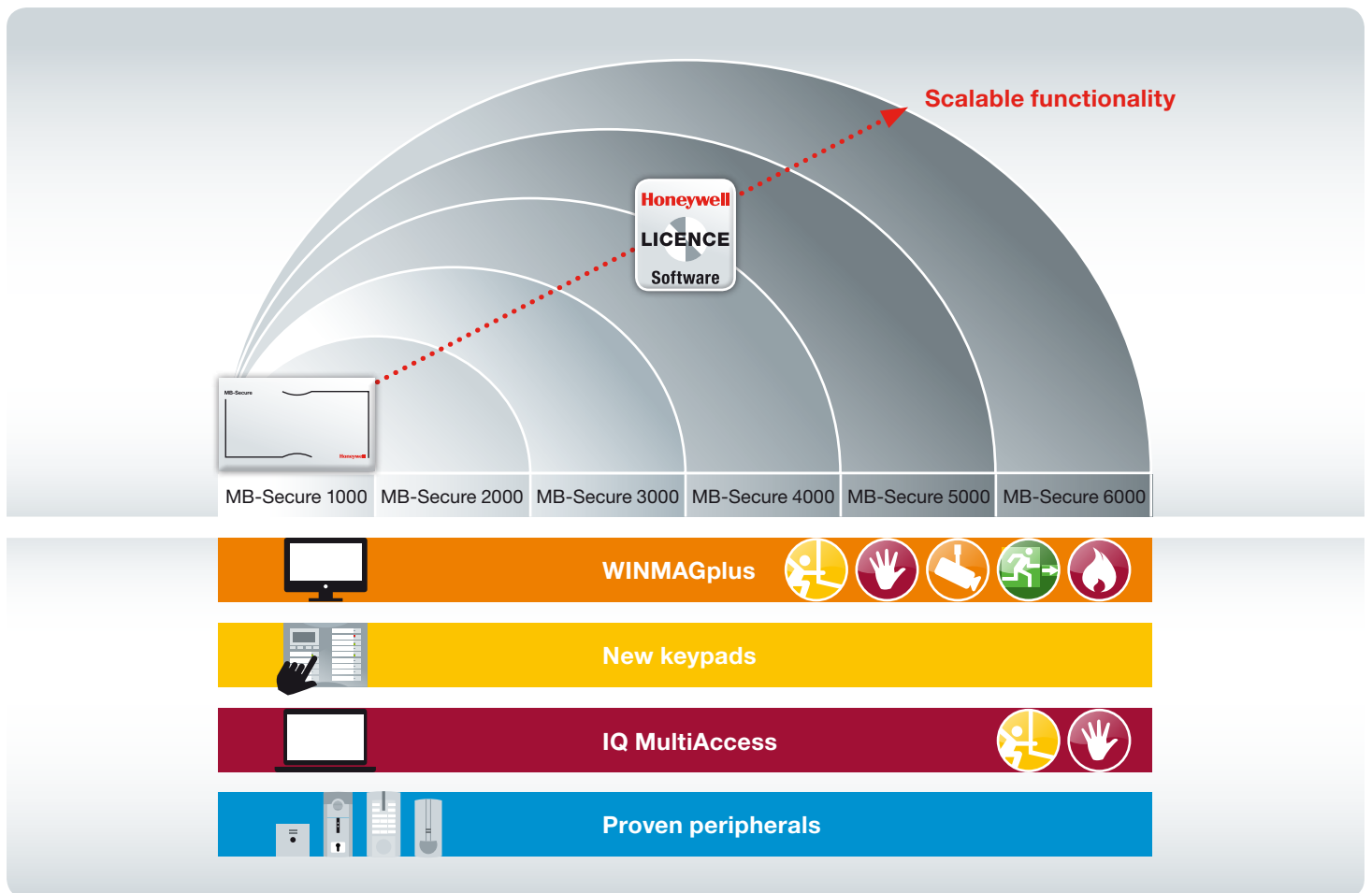


### Integration without compromise

With MB-Secure, Honeywell Security has ushered in a paradigm shift in security technology. As a modular platform for intrusion detection and access control, the new control panel offers the full range of possibilities of innovative security systems. This unique flexibility is based on a modular concept: only get what you need. Thus nearly all integration and expansion requirements can be met with significantly less hardware, from simple peripheral additions to a video surveillance connection.

### From control panel to security platform

All control panel variants of the MB-Secure are equipped with full functionality and a uniform firmware. The desired functions can be easily activated through license keys. This allows for functionality upgrades through simple exchange of the license key. Each control panel can be combined with each housing, and hence being ready for every expansion level, regardless of whether they involve economical solutions for smaller buildings or cross-system security concepts.



## Discover the possibilities

The modular hardware and software concept makes it possible to assemble a security system individually and expand its performance capacity as needed via software. In this manner, customers always get exactly what they require: solutions that aren't oversized today and can always be expanded tomorrow. A comprehensive range of hardware, including additional BUS or I/O modules, provides nearly limitless possibilities for expanding the MB-Secure in the future.



## MB-Secure: the highlights

- Modular platform for cross-system security solutions for intrusion alarm and access control
- Comprehensive solution concept, including hardware, software, services, macros
- Flexible scalability
- Single firmware and hardware
- Functional expansion via license key, no exchange of control panel required
- More functions can be implemented with less hardware
- User-friendly design keypads: LED, LCD and touch
- Integrated Ethernet and USB
- New power supplies with higher efficiency — detached mounting via BUS connection
- EN and VdS C certification pending